



NCSEA Hill Tips Briefing 2017





- **Questions**

- Time for Q&A after the presentation
- Submit using the “Questions” box on your GoToWebinar dashboard
- Submit throughout the presentation

- **A/V issues**

- Use the Chat box in your dashboard
- Email chriswilliams@ncsea.org



Hill Tips Briefing and Reference Documents can be accessed and downloaded at:

<http://www.ncsea.org/hill-tips>

Resources include:

- Hill Tips Briefing PowerPoint Presentation
- House Ways & Means Committee Child Support Staff
- Senate Finance Committee Child Support Staff
- Annotated National CSE Data
- Legislator Meeting Report Form
- Tips for a Successful Meeting



Today's Agenda

- Introductions
- NCSEA's advocacy efforts – 2016
- 2017 political climate & key issues facing child support
- How to schedule a Legislative visit
- Effective communications tips when meeting with a legislator
- Key NCSEA resources
- Q&A

Our Speakers



Lisa Kelly Skenandore
*Vice President, Business
Development*
**Systems & Methods, Inc.
(SMI)**



Tom Joseph
*NCSEA Legislative
Representative*
Waterman & Associates



Diane Potts
Senior Associate
**Center for the Support of
Families (CSF)**



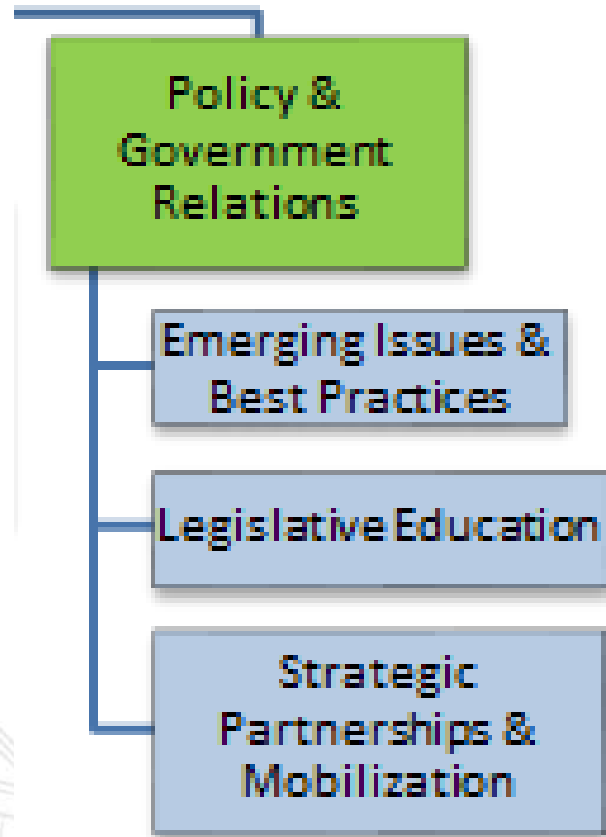
NCSEA Policy & Government Relations (PGR) Committee Co-Chairs



Jim Fleming
IV-D Director
North Dakota
Division of Child Support



Kate Cooper Richardson
IV-D Director
Oregon
Child Support Program





PGR

Kate	Cooper Richardson
Robbie	Endris
Kay	Farley
Jim	Fleming
Corri	Flores
Mike	Henry
Tom	Joseph
Lisa	Kelly Skenandore
Brad	Logsdon
Wally	McClure
Andrew	Moore
Kim	Newsom Bridges
Frances	Pardus-Abbadessa
Diane	Potts
Nicole	Reece
Robert	Riddle
Tracy	Rumans
Barb	Saunders
Eileen	Stack
Mike	Williams
Jeff	Witthun

Legislative Education

Michele	Ahern
Carol	Beecher
David	Castagnola
Kate	Cooper Richardson
Susanne	Dolin
Jim	Fleming
Laura	Galindo
Tom	Joseph
Lyndsy	Landry Irwin
Jeff	Leggett
Wally	McClure
Catherine	Ongiri
Diane	Potts

Strategic Partnerships

Vernon	Drew
Leon	Fernando
Tom	Joseph
Amy	Kownack
Phyllis	Nance
Kim	Newsom Bridges
Frances	Pardus-Abbadessa
Amy	Roehrenbeck
Chris	Williams
Irene	Curran

Emerging Issues & Best Practices (EI&BP)

Kristie	Arneson
Paul	Bourdoulous
Andrew	Chin
Kate	Cooper Richardson
Stephanie	Draughon
Jim	Fleming
Aimee	Furdyna
Gary	Gamble
Brad	Logsdon
Pam	Lowry
Ann	Murray
Patrick	O'Malley
Paula	Phillips
Sharon	Santilli
Jackie	Scharping
Bryan	Tribble
Ronald	Truss
Jane	Venohr
Bob	Williams
Jeff	Witthun
Ellen	Wood



- Where is child support in the swirl of health and human services activity?
- Where does HHS Secretary nominee Tom Price (R-GA) stand on child support?
- Who will lead OCSE & ACF?
- Is Congress re-examining the Obama final rule on Flexibility, Efficiency, and Modernization in Child Support Enforcement Programs?



- Final Rule

- OCSE's goal, as stated in the title of the rule, is to modernize and improve efficiency and flexibility

- NCSEA is on record supporting the final rule

<http://www.ncsea.org/breaking-news/ncsea-statement-on-ocse-final-rule/>

- **Ability to pay** – regulations regarding child support guidelines and order-setting practices were changed to promote use of imputed income only as a last resort to “fill evidentiary gaps” rather than as an alternative to looking at the specific circumstances of the obligor



- **Final Rule** (continued)
 - **Inmates** – regulations were changed to require review and appropriate modification of the child support obligation of a parent who is incarcerated for 180 days or more, and that the incarceration must be considered a substantial change in circumstances rather than viewed as “voluntary unemployment”
 - **Case closure** – the regulation allowing cases to be closed was expanded considerably to give states more flexibility to close nonproducing cases and re-focus program efforts on cases which are more likely to lead to collections



- **Final Rule** (continued)
 - **Contempt of court** – to help prevent incarceration based on poverty or unknown income rather than willful failure to pay, child support agencies have additional requirements for screening cases prior to scheduling contempt hearings and providing notice that the hearing will focus on the parent's ability or inability to pay
 - **Medical support** – in determining how to establish or modify an obligation to provide for medical support for the child, child support agencies have the flexibility to consider public coverage as well as private coverage.



- **Congressional Review Act**

- Allows the House and Senate to nullify any recently finalized federal regulation by a simple majority vote in both chambers — so long as the President agrees.
- Republican leaders had asserted that the child support NPRM contained provisions that were the purview of Congress.
- OCSE struck provisions (e.g., FFP for employment and training) from the final rule.
- To date, House has passed legislation reversing 5 Obama rules — child support NOT one of them.

- **Midnight Rules Relief Act**

- House passed bill allows consolidation & rejection of Obama rules into one bill. No Senate action.



- Schedule your appointment in advance/as early as possible
 - Drop-ins = not effective
- Email the legislator's scheduler/staff or call the U.S. Capitol switchboard (202-224-3121) and ask to be connected to your Senator or Representative
- Understand that you're not the only person/group on that legislator's schedule
 - You may have as little as 15 minutes to present your information
 - Brevity and organization are key—hit your key issues first and stick to your talking points



Recognize that you will likely meet with the Legislative Assistant (LA) covering child support – **not** the Legislator

- **Don't underestimate** their power or influence on their boss
- Keep it simple—the LA is responsible for numerous issues and, if at all familiar with the program, knows only the basics
- You are there to help them help their boss
- The Legislator relies on staff for information—the LA often serves as a gatekeeper for information and access to the Member



- Introduce yourself and thank them for their time
- Make sure they have your contact information
 - Email, phone, and work address
- **Don't assume** your legislator or their staff understand the details of child support—**don't use** workplace jargon
 - TANF, FFY, imputation, etc.
- Don't be surprised if the staffer or legislator thinks you are there to discuss child welfare
 - Be prepared to explain the difference and then move on with educating on the child support program

Keep in mind that your goal is to develop an *ongoing* relationship with your elected representatives and staff, as well as to educate them on particular issues that they may need to vote on



- Make sure the legislator understands the significance, importance, and bipartisan nature of the child support program
- Share some key statistics (national/state/county), but don't overwhelm them with stats
- Know your issue—if you do not know the answer to a question, **don't guess**. If you make an educated guess, make sure they know that you will follow up with a definitive answer
- Approach the meeting as if you were briefing your governing board



- Be a good listener and hear out what your legislator has to say on the issue(s)
- Don't debate or give ultimatums—listen to their questions/concerns, recognize them, and answer with facts
- Share local case-related stories to help make your point and invoke real-world, constituent impacts
- Remember—all causes are **good** causes. You must convince your legislator that there is something extra special about yours



- Be confident and don't be intimidated—legislators and staff view you as the expert on the issue
- Emphasize the main points of your conversation in a follow-up letter and make sure to thank the legislator or staff for taking the time to meet and hear your position
- As the meeting closes, summarize what follow-up you'll be providing (*always provide follow-up*)
- Report back to NCSEA on the meeting outcomes using the **Legislator Meeting Report Form**, and include whether NCSEA needs to follow up with the legislator's office



- Be clear on whom you represent and why you are there
 - There is a fine line between lobbying (which is **not permitted** in a federally-funded program) and providing information and background on key issues
- Be clear that you are **not** representing the entire child support community or NCSEA, even if you share some of NCSEA's documents with the legislator or staff member
 - NCSEA's Policy Manual explicitly restricts who may and may not speak on behalf of the Association



NCSEA has many resources that may assist in your conversation. Some of these are for your reference, while some are intended as a leave-behind for the legislator and their staff.

Resources for You

- Hill Tips Briefing Power Point Presentation
- House Ways & Means Committee Child Support Staff
- Senate Finance Committee Child Support Staff
- Legislator Meeting Report Form
- Tips for a Successful Meeting
- Issue briefs/talking points

Resources for Legislators & Staff

- Annotated National CSE Data
- NCSEA Quick Facts
- NCSEA State Success Stories (sent directly to IV-D Directors upon updating)



- Educational documents on the NCSEA website
 - NCSEA Board of Directors' Resolutions & Policy Statements
<http://www.ncsea.org/advocacy-public-policy/ncsea-board-resolutions-policy-statements/>
 - Legislative Updates
<http://www.ncsea.org/advocacy-public-policy/legislative-updates/>
 - Quick Facts
<http://www.ncsea.org/advocacy-public-policy/quick-facts-for-legislators-interested-parties/>



[MEMBER LOGIN](#) [CONTACT US](#) [JOIN NCSEA](#)

[SEARCH](#)

[HOME](#)

[ABOUT NCSEA](#)

[MEMBERSHIP](#)

[PROGRAMS & EVENTS](#)

[ADVOCACY & PUBLIC POLICY](#)

[RESOURCES & INFO](#)

[NCSEA Board Resolutions & Policy Statements](#)

[NCSEA Legislative Updates and White Papers](#)

[Quick Facts](#)

[Hill Tips – Resources for Educating Federal & State Legislators](#)



[DAR](#)

[S](#)

[NCSEA U](#)

[NCSEA CONNECT](#)

2017 NCSEA Policy Forum
February 16-18, 2017



#ncsea2017

Register Today

Renaissance Washington, DC Downtown Hotel

999 Ninth Street NW,
Washington DC, 20001

Pre-Conference Registration closes Feb. 2nd!



Keep NCSEA informed
on Legislator visits
so we can help you
continue the
conversation!

Fill out our online
Hill Visits survey at:

<https://www.surveymonkey.com/r/2017pfhillvisits>

The screenshot shows the survey interface for the 2017 NCSEA Policy Forum - Legislative Visits. At the top is the NCSEA logo. Below it, the title "2017 NCSEA Policy Forum - Legislative Visits" is displayed. The survey is titled "1. About This Survey". The introductory text states: "NCSEA is engaging its membership in a voluntary survey to identify those members attending the 2017 NCSEA Policy Forum who are also planning legislative visits on Capitol Hill. NCSEA's goal is to provide members with additional resources and information to enhance their legislative visits and to track contacts with Members of Congress by NCSEA members." The first question is: "1. Are you, or any members of your staff, scheduling (or have scheduled) visits with Members of Congress prior to/during/after the 2017 NCSEA Policy Forum?". It has three radio button options: "Yes", "No", and "Prefer not to say". The second question is: "2. If yes, please list Members of Congress that you have visited/will be visiting (example: Rep. Paul Ryan (R-WI)):". Below this question are two text input fields, each preceded by the label "Legislator (Party-State)".

2017 NCSEA Policy Forum - Legislative Visits

1. About This Survey

NCSEA is engaging its membership in a voluntary survey to identify those members attending the 2017 NCSEA Policy Forum who are also planning legislative visits on Capitol Hill. NCSEA's goal is to provide members with additional resources and information to enhance their legislative visits and to track contacts with Members of Congress by NCSEA members.

1. Are you, or any members of your staff, scheduling (or have scheduled) visits with Members of Congress prior to/during/after the 2017 NCSEA Policy Forum?

☐ Yes

☐ No

☐ Prefer not to say

2. If yes, please list Members of Congress that you have visited/will be visiting (example: Rep. Paul Ryan (R-WI)):

Legislator (Party-State)

Legislator (Party-State)



Lisa Kelly Skenandore

lisa.skenandore@smimail.net

Tom Joseph

tj@wafed.com

Diane Potts

dpotts@csfmail.org

Jim Fleming

jfleming@nd.gov

Kate Cooper Richardson

kate.richardson@doj.state.or.us

Chris Williams

chriswilliams@ncsea.org



2017 NCSEA Policy Forum *February 16-18, 2017*

#ncsea2017

Renaissance Washington, DC Downtown Hotel

National Child Support Enforcement Association

LEADERSHIP 2017 SYMPOSIUM

AUGUST 6-9, 2017 SCOTTSDALE, AZ

THE PHOENICIAN, A LUXURY COLLECTION RESORT

For more information, visit www.ncsea.org/conferences

#ncsea2017 



For more information, visit www.ncsea.org/webtalks

Upcoming 2017 Topics

March 16, 2017

The Importance of Cultural Competency Free!

April 6, 2017

Fatherhood and Child Support: Partnering for Success Free!

April 26, 2017

Technology Trends: Statewide Systems Improvements & Mobile Apps

May 4, 2017

Establishment of Paternity or Establishment of Parentage?

May 18, 2017

Customer Services Best Practices Free!